

## Introduction

Welcome to marquetry kit "Butterflies" from QJS Marquetry. These designs are relatively simple to cut, though both have some detailed sections.

The pack includes enough veneer to complete both designs (please note that your colours may vary a little from those shown in the pictures.) The blue Ulysses butterfly (*Papilio ulysses ambiguus var rothschild*) is the simpler of the designs and instructions for both assume you are familiar with the "window method" of cutting marquetry. If not, please complete the included "leaf" test piece first.

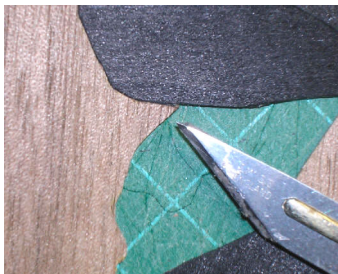


## "Butterflies"



### Ulysses (Blue)

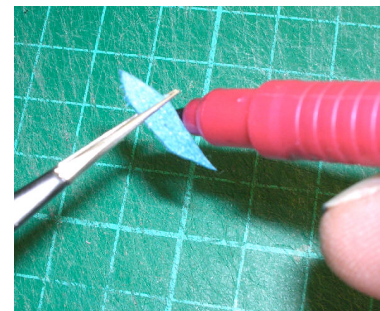
Tape the design sheet onto one of the background pieces so that the butterfly is positioned where you want it to be.



Mark out and cut in the outline of the butterfly using the black veneer. We recommend that each side of the butterfly consists of four sections, as shown by the dotted red lines on the drawing, with the grain running in the directions shown by the solid red lines. This alignment makes cutting the blue sections easier and gives a variation in reflection which looks attractive. Take care to tape any areas of the background where small cross-grain sections may break away – such as the area at the knife tip in this picture.

Trace through and cut in the separate areas of blue (the coloured transfer paper is easier to see on the black veneer than the normal carbon paper). In the top half of the wings the "veins" can generally be created by leaving thin pieces of black between each blue piece inserted. The lower wings can be made the same way, but the veins need to be very thin. If you find this difficult, try the "cheat" method as follows!

**Cheat for Veins** – Cut the whole of the blue area of a lower wing in three or four sections following the lines of a vein. Cut pieces of blue to fit, with the grain direction radiating out from the body. Tape them in place but **DO NOT GLUE THEM IN**. Take



*one piece and cut into sections along the remaining grain lines (see photo), then, using a permanent marker (not a water-based one as the colour may run into the PVA glue) carefully colour the edge of each piece – taking care not to get ink on the veneer face. Once the pieces have dried, place them into your picture and glue up as normal.*

Once the wings are complete, cut in the head and body using the dark veneer. Putting the grain across the body may give it a nice "stripy" look.

Finally cut in the feelers. Ideally cut a very thin slot, removing just a sliver of background veneer. Cut a sliver of black from the edge of the veneer sheet, roll it to flatten it (I use the handle of my Ernie Ives craft knife) and insert it in the slot. When glued, the moisture in the glue will cause the insert to swell back and fill the slot snugly.

***Cheat for Feelers*** – *For really fine feelers make a single knife cut right through the background veneer. Scrape some dust from a piece of black veneer and coax it into the knife cut. Brush off any excess, then rub some glue in from the back of the picture to seal.*

### **Monarch – (Yellow & brown/orange)**

Tape the design sheet onto one of the background pieces so that the butterfly is positioned where you want it to be.

Mark out and cut in the outline of the lower wings using the black veneer, extending slightly into the area of the upper wing (see photo). We recommend that the grain of the lower wings runs directly towards the head. Cut in the yellow sections. If you have the facility to darken the colour by scorching the veneer against a soldering iron or using hot sand then a pleasing effect can be achieved by darkening the top edges of the yellow sections as shown.



Then cut in the black for the upper wings and add the large brown/orange sections. Again shading can be used to soften the transition to black (see photo), but this is not essential and an attractive result can be achieved without shading.

Continue cutting, adding the smaller spots, body and feelers. Small spots can be cut out using six tiny "stabs" in a hexagon pattern. Rather than trying to cut a piece to fit using the window method, cut a thin strip of white veneer the same "width" as the hexagon hole. Shape the end of the strip to match the hole, then "snip off" the end of the strip and coax it into the hole. It may need very slight trimming to get a good fit. Tape in place and glue in as normal.

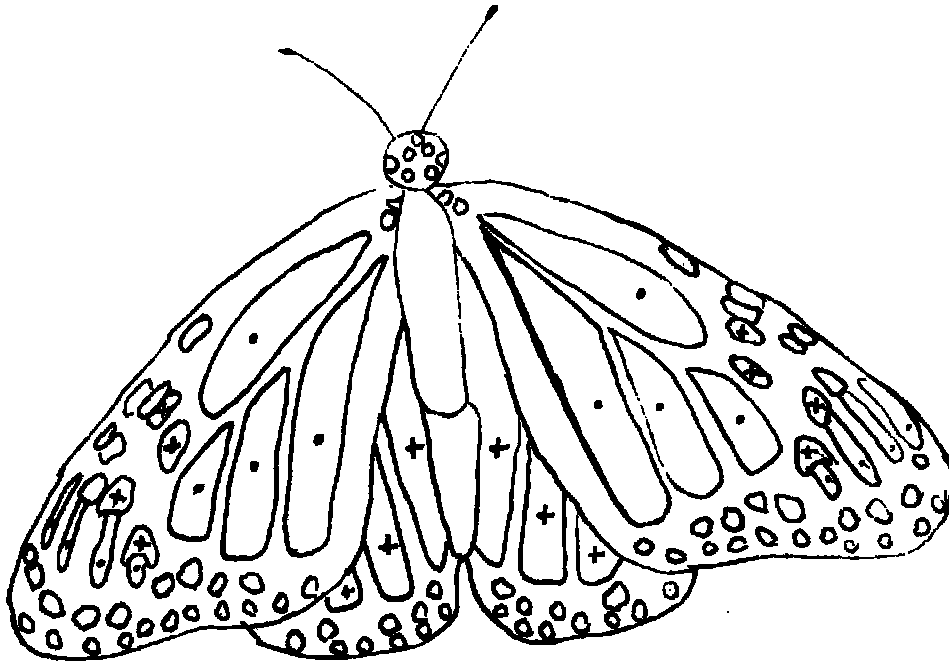
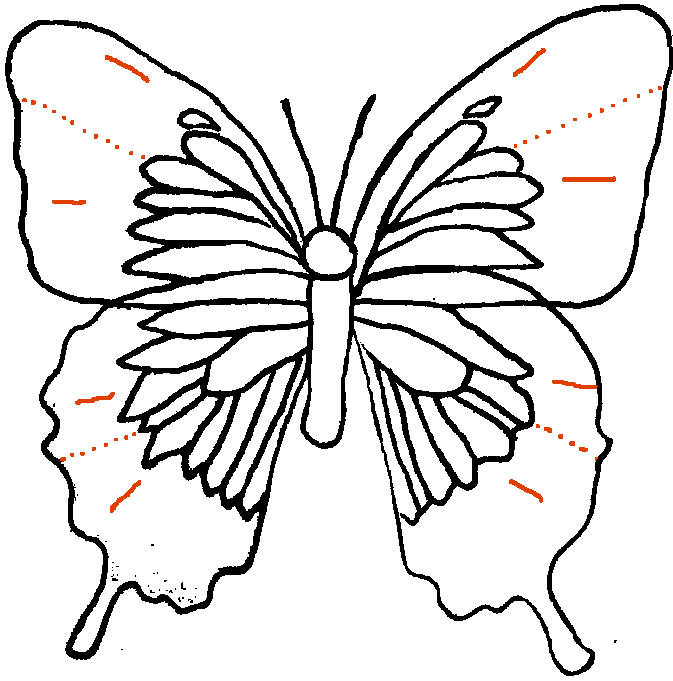
For information about mounting, sanding and polishing your picture please visit [www.qjsmarquetry.co.uk/kits.php](http://www.qjsmarquetry.co.uk/kits.php)

For more help and information about marquetry please contact:

**QJS Marquetry** - 01785 850614 - [www.qjsmarquetry.co.uk](http://www.qjsmarquetry.co.uk)

**The Marquetry Society** - [www.marquetry.org](http://www.marquetry.org)

Packing list: Instructions – veneers – drawings and photo sheet – practice piece – carbon & transfer paper



• BROWN  
+ YELLOW

